



三菱電機(香港)有限公司
Mitsubishi Electric (Hong Kong) Limited

辦事處及陳列室 Office & Showroom:

香港太古城英皇道 1111 號 20 樓
20/F., 1111 King's Road, Taikoo Shing, Hong Kong
電話 Tel: (852) 2510 0555

網址 Website: <https://www.mitsubishielectric.com.hk>

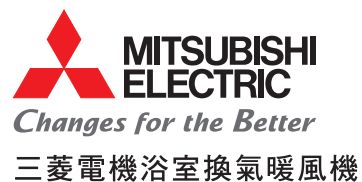
維修服務中心 Service Centers:

香港: 香港九龍九龍灣臨樂街 8 號商業廣場 7 樓
Hong Kong: 7/F, Corporation Square, 8 Lam Lok Street, Kowloon Bay,
Kowloon, Hong Kong
電話 Tel: (852) 2427 8484

澳門: 電話 Tel: (853) 6269 9203
Macau:



P366-21 Sept 2021



貼心舒適新享受

New Comfortable Enjoyment for You



舒適又節能

Comfortable & Energy-Saving



衣類乾燥
Laundry Drying



浴室乾燥
Bathroom Drying



浴室暖氣
Bathroom Heating



浴室換氣
Bathroom Ventilation



送風
Fan Cooling

5.8kg
機身輕巧
Compact Body

225m³/h
風量(循環+換氣)
Air Volume (Circulation + Ventilation)

平面面板設計
Flat Panel Design
易於清潔
Easy to Clean



舒適又節能！

Comfortable & Energy-Saving



浴室乾爽24
Refresh Your Bathroom Always



浴室晾衣，家居不雜亂！
Dry laundry in bathroom, keeping your home tidy!

衣類乾燥 Laundry Drying



「溫風乾燥(弱)」模式

晚上慢速烘乾衣物，相比「溫風乾燥(強)」，
省電約 22% (詳情請參閱本冊子 P.3)



Dry Hot (Low) Mode

Dry clothes slowly by heat at night, saving power for
about 22% comparing with Dry Hot (High) (Please refer to
P.3 for details)

迅速消除濕氣，乾淨又清爽！
Remove moisture quickly, making it clean and refreshing!

浴室乾燥 Bathroom Drying



「風乾燥」模式

非暖房式烘乾，相比「溫風乾燥(強)」/
(弱)，省電約 95% (詳情請參閱本冊子 P.4)



Dry Cool Mode

Dry without heat, saving power for about 95%
comparing with Dry Hot (High) / (Low) (Please refer to
P.4 for details)

寒冬時享受貼心舒適的溫暖！
Enjoy intimate and comfortable warm in winter!

浴室暖氣 Bathroom Heating

入浴前・入浴中
Before bathing · During bathing



遠距離暖風

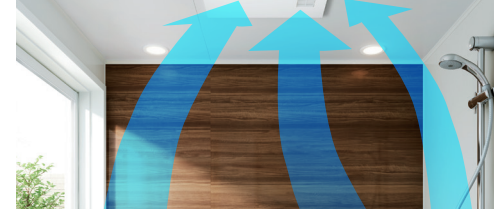
* 暖房(強)模式

Long Distance Warm Airflow

* Heating (High) Mode

全面促進室內空氣流通！
Thoroughly enhance indoor air circulation!

24小時換氣 24-hour Ventilation



炎夏入浴更舒適！
Bathing in summer becomes more comfortable!

送風 Fan Cooling



衣類乾燥

Laundry Drying



「衣類乾燥」模式特別適合夜間使用，令浴室瞬間變成晾衣間，是您晾衣的好幫手！

Especially suitable for night time use, Laundry Drying mode is a good helper for your laundry, turning your bathroom into a laundry room instantly!



有了「衣類乾燥」功能，就能在浴室晾乾衣物，從此不必再為尋找晾衣的地方而煩惱。

With **Laundry Drying** function, you can dry clothes in the bathroom, and no longer have to worry about finding places for drying clothes.



2公斤衣物
只需約150分鐘
乾燥時間
(詳細請參考以下測量條件)
Take about 150 minutes of
drying time for 2 kg
of clothing (please refer to
the following measurement
conditions for details)



衣類乾燥時間與耗電量

Laundry Drying Time and Power Consumption

機型 Model	運轉模式 Operation Mode	乾燥時間(分) Drying Time (min.)	耗電量(kWh) Power Consumption (kWh)
V-241BZ-HK	溫風乾燥(強) Dry Hot (High)	150	3.8
	溫風乾燥(弱) Dry Hot (Low)	210	2.9

測量條件：[1] 衣物乾燥重量：2 公斤 [2] 浴室空間大小：1.6m x 2.4m x 2.2m；有窗戶、隔熱設計 [3] 全自動洗衣機洗衣 5 分鐘（脫水度：60%） [4] 室外溫度：20°C；室外相對濕度：約 60% [5] 乾燥時間指乾燥度達 97% 所需的運轉時間。乾燥時間或耗電量會受到衣物種類、晾衣方式、脫水方式、浴室形態、室外溫度和相對濕度等條件影響而有所變化。

Measurement Conditions: [1] Weight of clothes for drying: 2kg [2] Bathroom size: 1.6m x 2.4m x 2.2m; with windows and insulation design [3] Fully automatic washing machine operates for 5 minutes (dehydration degree: 60%) [4] Outdoor temperature: 20°C; outdoor relative humidity: about 60% [5] Drying time refers to the operation time that the device takes to increase the clothing dryness up to 97%. Drying time or power consumption may vary due to the changes of conditions including type of clothing, laundry method, dehydration method, shape or specification of bathroom, outdoor temperature and relative humidity.

省電
Power Reduced by
約 22%

*資料由三菱電機廠方提供
* Source: Mitsubishi Electric factory

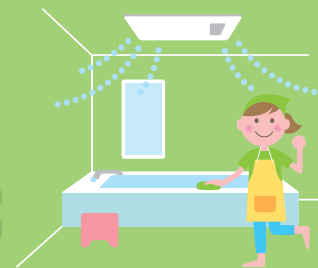
浴室乾燥

Bathroom Drying

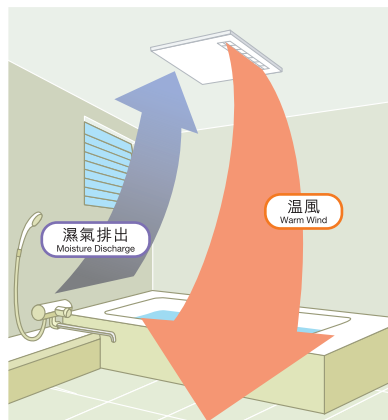


徹底乾燥浴室每個角落，有助預防發霉；更備有「風乾燥」模式，有助節省電力！

It thoroughly dries every corner of the bathroom to assist in preventing mildew. The Dry Cool mode can also help saving power!



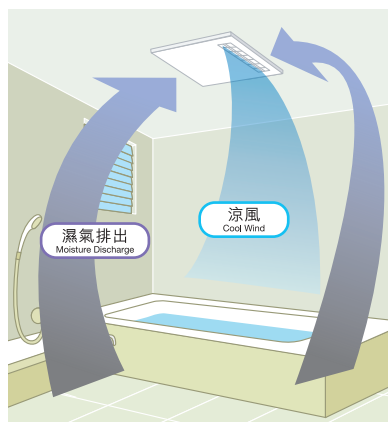
「溫風乾燥」模式 | Dry Hot Mode



入浴後，只需採用「溫風乾燥」模式（溫風 + 換氣），即可迅速消除濕氣和令人討厭的霉味，也有助抑制長霉和結露。

After bathing, you can simply use **Dry Hot mode** (warm wind + ventilation) to quickly eliminate moisture and unpleasant moldy odor. It can also be of assistance in preventing mildew and condensation.

「風乾燥」模式 | Dry Cool Mode

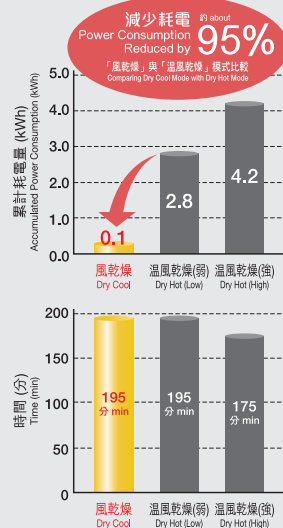


採用「風乾燥」模式（涼風 + 換氣）既能令浴室經常保持乾燥，更有助節省電力。

By using **Dry Cool mode** (cool wind + ventilation), it not only keeps the bathroom dry all the time, but also saves power for you.

浴室乾燥時間與耗電量 Bathroom Drying Time and Power Consumption

三菱電機廠方對 V-241BZ-HK 機型進行乾燥程序後的實測值：
Test results measured by Mitsubishi Electric factory on model V-241BZ-HK after performing the drying process:



測量條件：在下列條件使用浴室後，利用結露感應器測量乾燥情況：[1] 浴室空間大小：1.6m x 2.4m x 2.2m [2] 室外溫度：20°C；室外相對濕度：約 60% [3] 使用浴缸（水溫：50°C；流量：8 公升/分鐘；持續時間：20 分鐘） [4] 使用花灑頭（水溫：50°C；流量：8 公升/分鐘；持續時間：20 分鐘） [5] 蓋上浴缸蓋或放掉洗澡水 [6] 啟動浴室乾燥功能。*乾燥時間和耗電量會因測量條件而有所差異。
Measurement Conditions: Use a condensation sensor to measure the degree of dryness of a used bathroom in the following conditions: [1] Bathroom size: 1.6m x 2.4m x 2.2m [2] Outdoor temperature: 20°C; outdoor relative humidity: about 60% [3] Using a bathtub (water temperature: 50°C; flow rate: 8 litres/minute; duration: 20 minutes) [4] Using a shower head (water temperature 50°C; flow rate: 8 litres/minute; duration: 20 minutes) [5] Cover the bathtub with a lid or drain the water in the tub. [6] Start the bathroom drying functions. *Drying time and power consumption may vary due to the changes of measurement conditions.

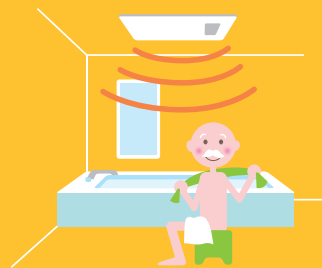
浴室暖氣

Bathroom Heating



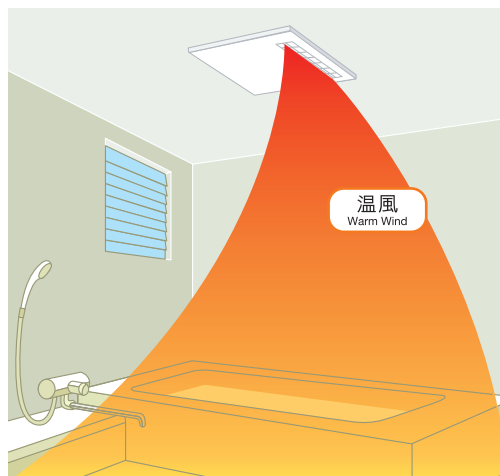
整個浴室和地板變得和暖又舒適，
冬天洗澡不怕冷！

The entire bathroom and the floor become warm and comfortable. Taking baths in winter can never be cozier!



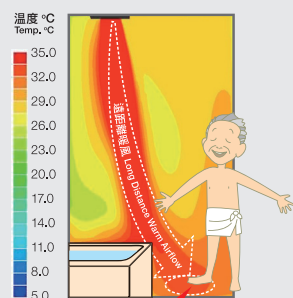
冬天時，「暖房」模式能令浴室迅速變暖，以免身體著涼，讓您盡情享受沐浴樂趣；「暖房（強）」模式的遠距離暖風功能，連冰冷的地板也吹得暖呼呼的，為雙足帶來無比舒適。

In winter, **Heating** mode can make the bathroom warm in an instant. It prevents your body from getting cold, allowing you to enjoy every pleasure of bathing. The long distance warm airflow under **Heating (High)** mode can even blow to warm up the cold floor, making your feet so comfortable.



溫度分佈圖

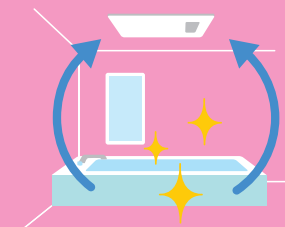
Thermograph of Temperature Distribution



遠距離暖風令地板溫暖，足部舒適。
Long Distance Warm Airflow blows to warm up the cold floor, making your feet comfortable.

浴室換氣

Bathroom Ventilation

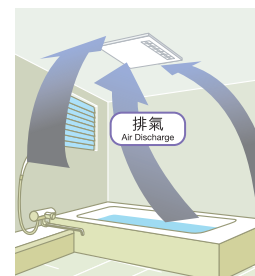


24小時循環換氣，令濕氣一掃而空，浴室處處乾爽！

24-hour Ventilation eliminates moisture, making every corner dry in bathroom!

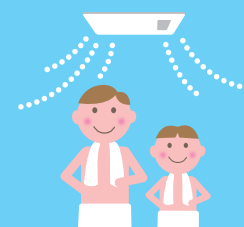
良好的換氣功能令沒有窗戶的浴室也能保持舒適乾爽，而「24小時換氣」功能更可全面提升家居空氣素質。

Good ventilation can keep places dry and comfortable even in a bathroom without windows. **24-hour Ventilation** function can even enhance the air quality at home.



送風

Fan Cooling



怡人清風，夏天沐浴倍感涼快舒服！

Make you feel cool and comfortable even bathing in summer!

「風乾燥」模式能像電風扇一樣吹出涼風，減少洗澡後身體迅即出汗的機會。無論夏天入浴或長時間泡澡，都令您倍感涼快舒服！

Dry Cool mode can work like an electric fan, decreasing the chance that your body sweats immediately after bathing. No matter bathing in summer or enjoying a long bath, it makes you feel extra cool and comfortable!



不僅浴室、洗手間，整個家居也需要換氣！

Not only bathroom and toilet, the entire home also needs good ventilation!

病態建築物症候群對策

Sick Building Syndrome Solution

由於都市建築的高密閉性，加上空調的普及，現代家居常有換氣量不足的問題。因此，由建築材料、家居用品等釋放出來的化學物質容易積聚，造成室內空氣污染。這就是所謂的「病態建築物症候群」。

Because of the city's high airtight construction, together with the popularity of air-conditioning, modern home often has the problem of inadequate ventilation. Therefore, chemicals released from construction materials and home appliances accumulate easily and lead to indoor air pollution. This is the so-called Sick Building Syndrome.

全面提升家居空氣素質

Enhance Air Quality At Home

在房間安裝換氣設備已成為新一代家居的趨勢，透過為全屋進行24小時持續換氣，全面提升家居空氣品質，時刻帶來健康、舒適的生活。

Installing ventilation equipment in rooms has become the trend of the next generation of home. Through 24-hour constant ventilation for the entire house, it can enhance the air quality at home, bringing you a healthy and comfortable life.

換氣設備為家居帶來3大好處

Ventilation Equipment Brings 3 Benefits to Your Home

24小時換氣

24-hour Ventilation

持續排走污染物質，令室內空氣常保清新乾淨。
Continuously discharge the air pollutants, keeping the indoor air fresh and clean.

小風量換氣

Ventilation with Low Air Volume

既能促進空氣流通，又不影響冷暖空調狀態。
Promote air circulation without affecting warm or cool air conditioning.

換氣路徑明確

Clear Ventilation Path

令空氣污染物或臭味按指定路徑排走，不會長時間停留。
Air pollutants or odors can be discharged in specified paths and will not stay long.

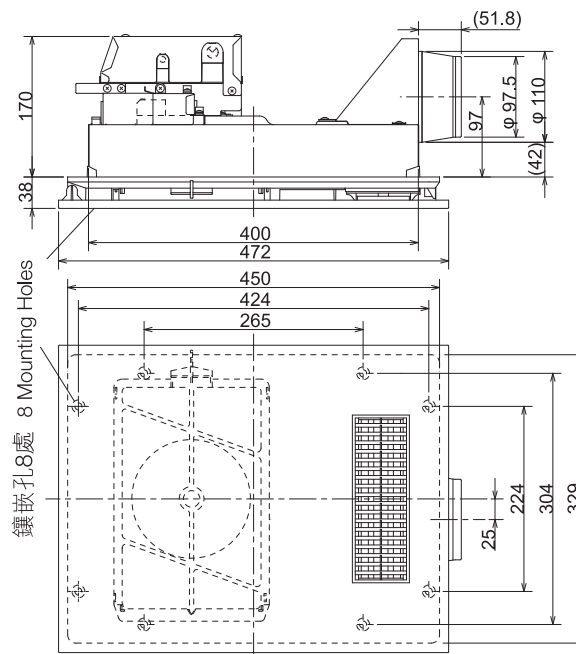
浴室乾爽24
Refresh Your Bathroom Always

- 天花式安裝
- 採用 PTC 陶瓷發熱器
- 平面面板設計，易於清潔
- 浴室乾燥、乾衣、暖氣、換氣及送風功能
- 內置防過熱的熱敏電阻和保險絲
- 30 分鐘至 8 小時時間設定
- 機身輕巧，輕易安裝
- Ceiling mounted
- PTC ceramic heater
- Flat panel design and easy for cleaning
- Bathroom Drying, Laundry Drying, Heating, Ventilation and Fan Cooling function
- Prevent overheating by using thermistor and fuse
- 30 minutes to 8 hours timer
- Compact size and easy for installation

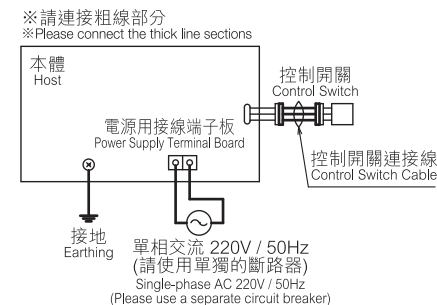
導管直徑
Duct Diameter
Φ100mm

天花板懸吊框架
安裝孔尺寸
Ceiling Mounted Installation
Frame Hole Size
420x300mm

外型尺寸圖 Dimension



接線圖 Wiring



功能規格 Specifications

功能 Function	運轉模式 Operation Mode	額定電流(A) Rated Current (A)	耗電量(W) Power Consumption (W)	風量(m³/h) Air Volume (m³/h)		噪音(dB) Noise (dB)
				循環風量 Air Volume (Circulation)	換氣風量 Air Volume (Ventilation)	
暖房 Heating	強 High	9.7	2,150	195	-	47
	弱 Low	6.6	1,400	120	-	36
乾燥 Drying	強 High	9.4	2,050	175	50	48
	弱 Low	4.2	910	175	50	48
	風乾燥 Dry Cool	0.16	34	225 (循環+換氣) (Circulation + Ventilation)		47
換氣 Ventilation	強 High	0.15	32	-	170	46
	弱/24小時換氣 Low / 24-hr Ventilation	0.11	14	-	110	34

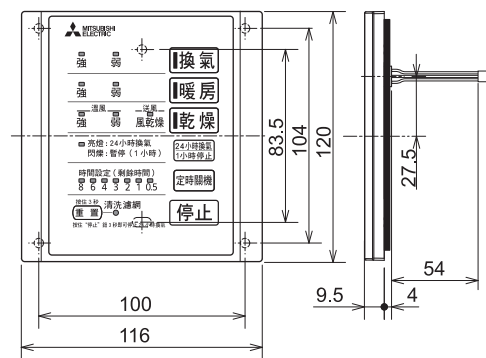
測量條件：[1] 風量、耗電、噪音值為關閉 (0 Pa) 條件下測量所得的數據，會因管線裝配狀態而有所差異。[2] 以上為周邊環境溫度 20°C 下測量所得的數據，會隨周邊環境溫度而有所差異。[3] 耗電量是根據 IEC 60335-2 及 JIS C9603 標準量度；風量和噪音是根據 JIS C9603 標準量度。

※設計和規格如有更改，恕不另行通知。

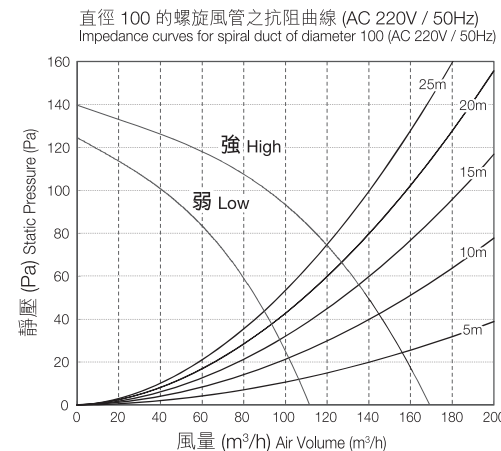
Measurement Conditions: [1] The data of air volume, power consumption and noise level are measured in an open-air condition (0 Pa). The data may vary due to the change of pipeline assembly situation. [2] The above data are measured at a surrounding temperature of 20°C. The data may vary due to the change of surrounding temperature. [3] The data of power consumption are measured based on IEC 60335-2 and JIS C9603 standards. The data of airflow volume are measured based on JIS C9603 standard.

※Designs and specifications are subject to change without prior notice.

控制開關尺寸 Dimension of Control Switch



P-Q 特性曲線圖 P-Q Characteristic Curve



控制開關面板 | Control Switch Panel

換氣 Ventilation

- 排出浴室內的空氣，進行換氣
- Ventilate by exhausting the air in the bathroom

暖房 Heating

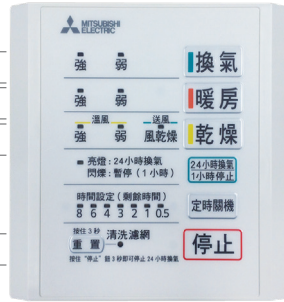
- 沐浴前或沐浴中，保持浴室溫暖
- Keep the bathroom warm before or during bathing

乾燥 Drying

- 利用溫風(強/弱)或是送風(風乾燥)來烘乾衣物或浴室
- Dry the laundry or bathroom by Dry Hot (High/Low) or Fan Cooling (Dry Cool)

重置按鈕 Reset Button

- 關閉清洗濾網指示燈
- 清洗濾網後，按住重置按鈕3秒以上
- Turn off the filter cleaning indicator light
- Press for 3 seconds or above after cleaning the filter



24小時換氣 / 1小時停止

24-hour Ventilation / 1-hour Pause

- 按下按鈕後，開始進行24小時換氣運轉
- 再按一次按鈕，24小時換氣功能會強制暫停1小時(1小時後自動恢復)
- By pressing this button once, the 24-hour Ventilation mode will start
- Press again this button, the 24-hour Ventilation mode will be forced to suspend for one hour (automatically recover after 1 hour)

定時關機 Off Timer

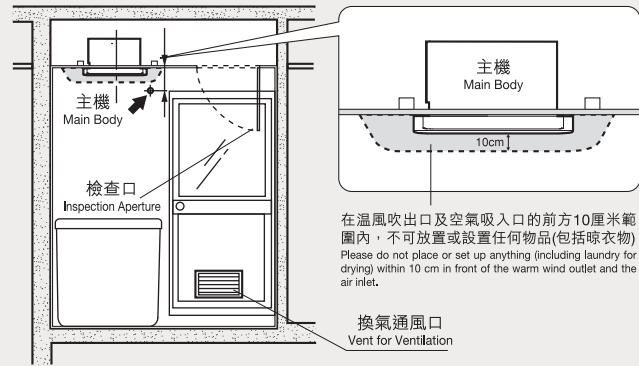
- 設定時間(剩餘時間)一到，即會停止運轉
- 24小時換氣運轉仍會持續
- When the preset off time (remaining time) comes, the device will stop running
- 24-hour Ventilation will still continue

停止 Stop

- 停止各項運轉。長按3秒，即能停止24小時換氣功能
- Stop all the operations. You can stop 24-hour Ventilation by pressing the button for 3 seconds

安裝注意事項 | Installation Guide

請使用以不可燃材料製造的排氣管道
Please use air ducts made of non-flammable material



安裝場所

Installation Site

- 請安裝於距離浴室地面 1.8-2.5 米的天花板上。
- 請按照指定尺寸安裝。
- 請使用專用管道。
- 請設置可供維修主機的檢查口。
- 如有任何疑問，請向經銷商查詢。

- Please install on the ceiling at a distance of 1.8-2.5m above the bathroom floor.
- Please install according to the specified size.
- Please use dedicated air ducts.
- Please set up an inspection aperture for device maintenance.
- If you have any query, please contact the dealer.

電氣安裝

Electrical Installation

- 安裝須由具專業資格的人員進行。
- 請安裝漏電斷路器。
- 請務必進行接地施工。
- 請把電源電線多加2米的餘量，否則可能無法進行主機維修。

- The installation must be done by qualified technicians.
- Please install an earth leakage circuit breaker.
- Please make sure to set the device earthed.
- Please lengthen the power cord for 2m more, otherwise maintenance service for the device may not be possible.

安裝浴室換氣暖風機

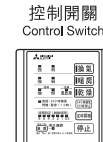
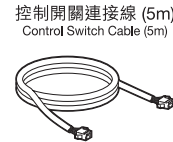
Installation of Bathroom Thermo-Ventilator

1 隨機供應的附件包括：

- 制開關連接線 (5m) x 1 條
- 控制開關 x 1 個

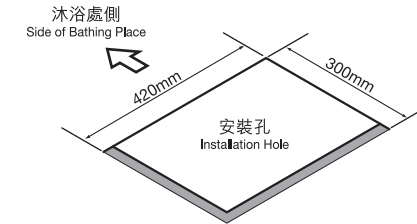
Accessories coming with the device include:

- Control Switch Cable (5m) x 1 piece
- Control Switch x 1 piece



2 在浴缸上方的天花中央位置開設安裝孔 (420mm x 300mm)。

Open an installation hole (420mm x 300mm) at the centre of the ceiling above the bathtub.



安裝控制開關

Installation of Control Switch

- 請把遙控電線多加 2 米的餘量，否則可能無法進行主機維修。
- 請使用隨機供應的控制開關。
- 請勿安裝於浴室內容易被水濺濕的地方。

- Please lengthen the remote control wire for 2m more, otherwise maintenance service for the device may not be possible.
- Please use the supplied control switch.
- Do not install at a place in the bathroom where is susceptible to water splash.

安裝晾衣杆

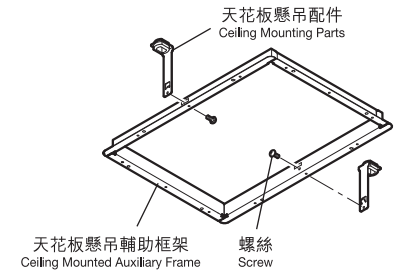
Installation of Laundry Pole

- 請將晾衣杆安裝在圖中所示的位置。
- 請選購具耐重性、耐蝕性與不燃性的晾衣杆。
- 請以圖中位置為基準來安裝晾衣杆。若安裝在基準尺寸位置以外，乾燥時間將會變長。

- Please install the laundry pole at the position shown in the following figure.
- Please purchase corrosion-resistant and non-flammable laundry poles with high load capacity.
- Please use the position shown in the figure as a benchmark to install the laundry pole. If the installation position is beyond the benchmark, the drying time will be longer.

3 組裝天花板懸吊輔助框架。

Install the ceiling mounted auxiliary frame.



4 將浴室換氣暖風機主體伸進天花板懸吊輔助框架。

Place the Bathroom Thermo-Ventilator into the ceiling mounted auxiliary frame.

